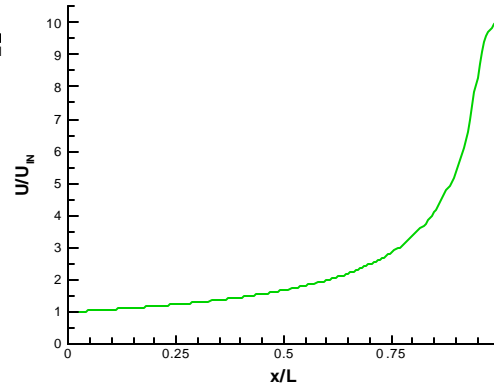
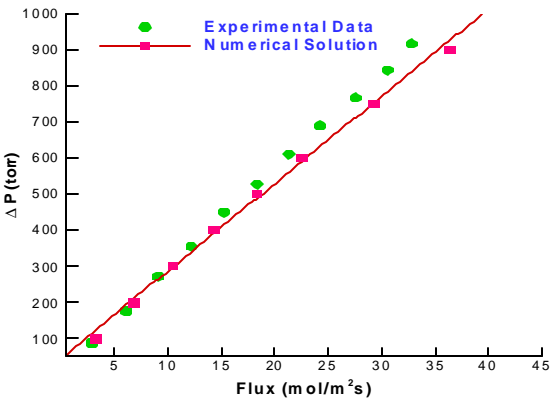
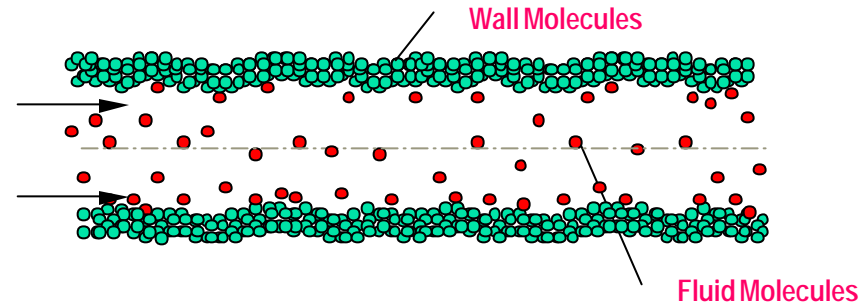
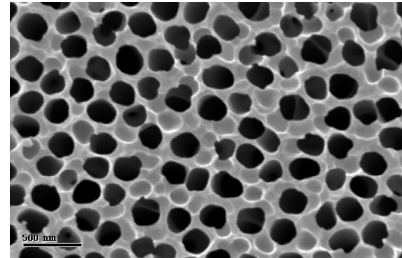
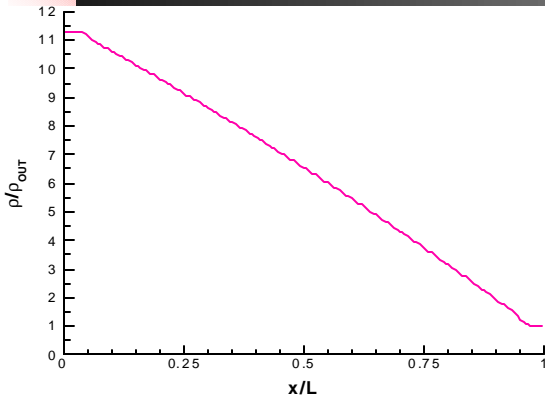




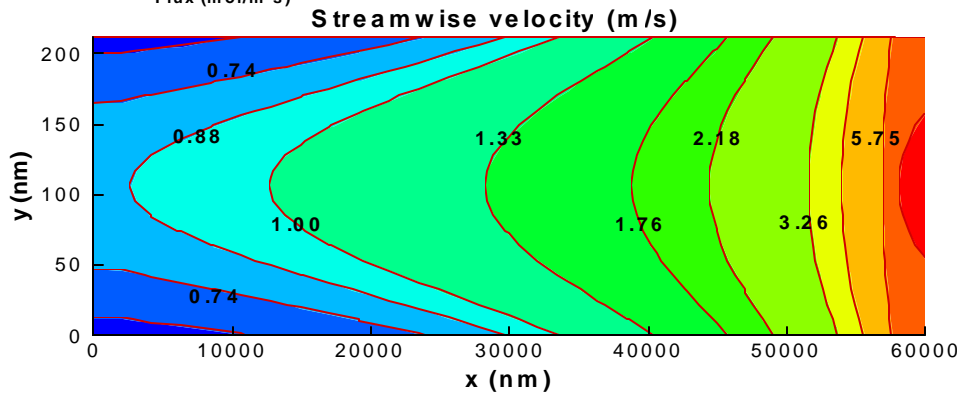
<http://cpdl.kettering.edu>

Nanopore



Channel Aspect Ratio: 300

Maxwell's model	$u_{slip} = b \cdot Kn \cdot h \left. \frac{\partial u}{\partial y} \right _{wall}$
Karniadakis & Beskok Model	$u_{slip} = b \cdot \frac{Kn}{1 + Kn} \cdot h \left. \frac{\partial u}{\partial y} \right _{wall}$
2nd Order Model	$u_{slip} = b \cdot \left[Kn h \left. \frac{\partial u}{\partial y} \right _{wall} + \frac{1}{2} Kn^2 h^2 \left. \frac{\partial^2 u}{\partial^2 y} \right _{wall} \right]$
Empirical Least Squares Model	$u_{slip} = b \cdot a \cdot Kn \cdot h \left. \frac{\partial u}{\partial y} \right _{wall} ; a = 1.253$
Proposed Model	$u_{slip} = b \cdot \sum_{j=1}^a Kn^j h^j a_j z^{-j} ; z = e^{bn}$



COLLABORATOR:
CENTER OF NANOTECHNOLOGY
(NASA AMES)